

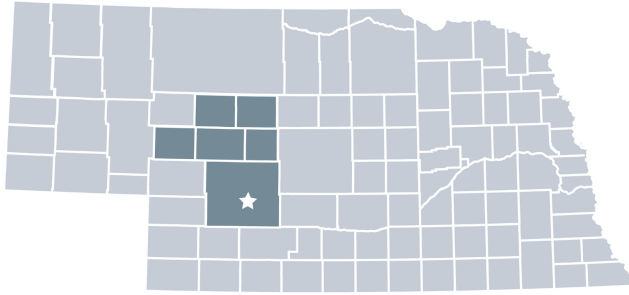
West Central District Health Department

2022 Profile



Contact:
 Shannon Vanderheiden, Director
 (308) 696-1201
vanderheidens@wcdhd.org
www.wcdhd.org

West Central District Health Department is locally governed and serves all **37,605** residents in **Lincoln, Logan, McPherson, Thomas, Hooker,** and **Arthur** Counties.



Our Priorities

Public health priority areas included in our current Community Health Improvement Plan (CHIP):

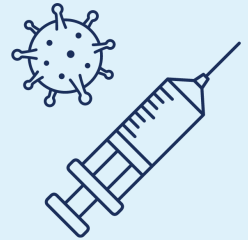
-  **Affordable and equitable access to care and services**
-  **Healthy lifestyles/wellbeing**
-  **Community collaboration**

COVID-19 Local Progress

Vaccinated & Boosted as of March 2022

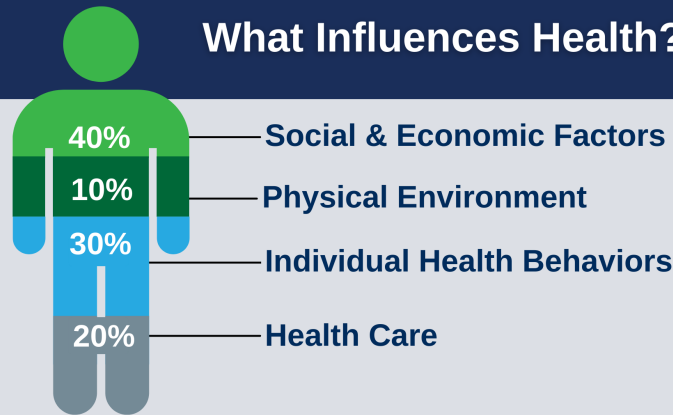
Over the last two years, health departments have been the frontlines of the COVID-19 response.

19.9% West Central
30.7% Nebraska
29.2% National



Source: Centers for Disease Control COVID Data Tracker, as of March 25, 2022

What Influences Health?



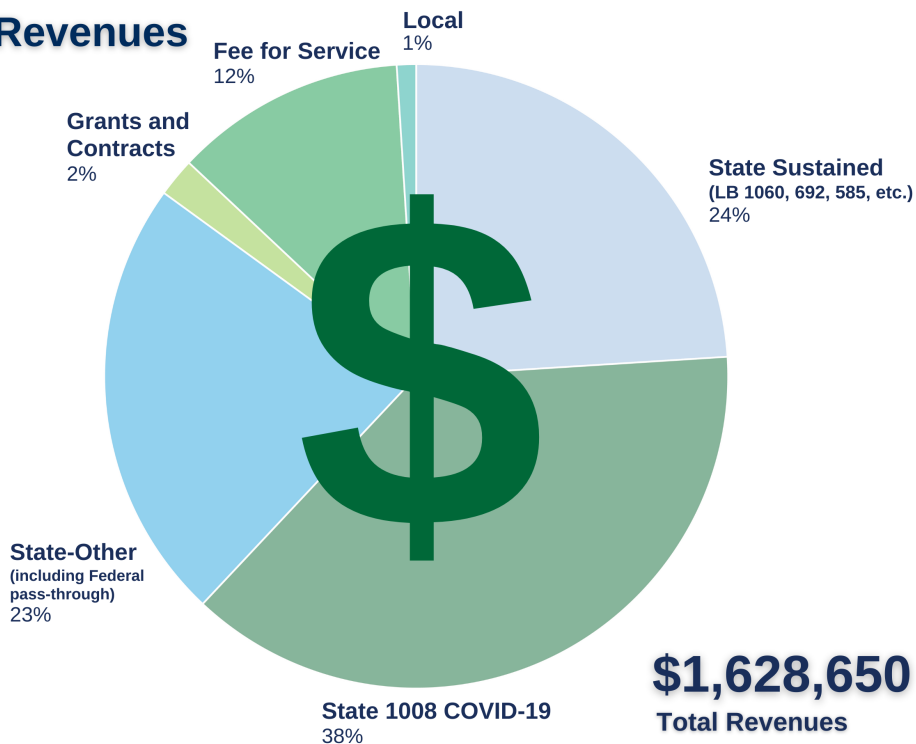
80% of what influences health and wellbeing occurs outside of the clinical care setting - in homes, workplaces, schools, and communities.

Local health departments (LHDs) are Chief Health Strategists - partnering across sectors to promote safety, prevention, and wellness to address that 80%.

Core Functions & 10 Essential Services of Public Health



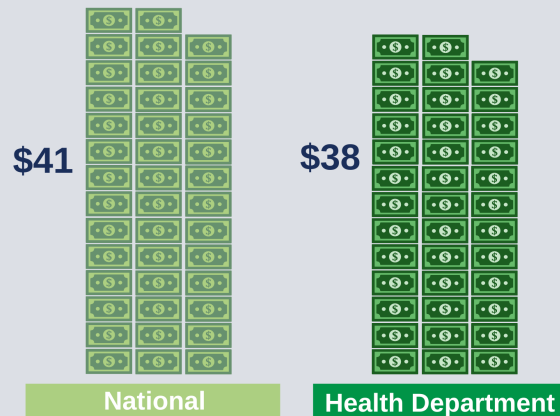
Revenues



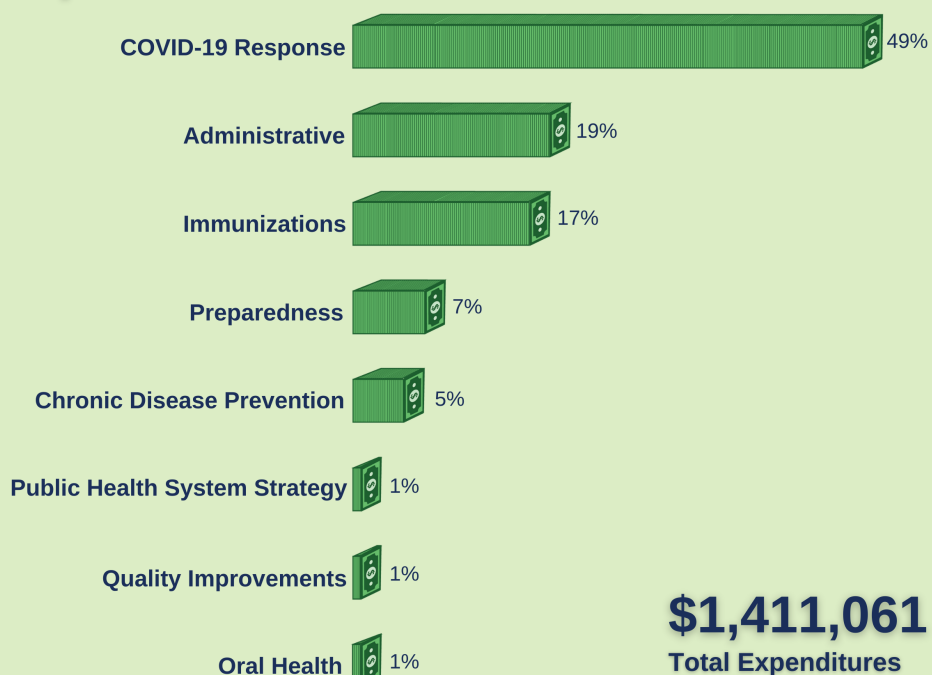
Worth the investment.

Every **\$1** invested in prevention **saves \$5.60** in health care costs!

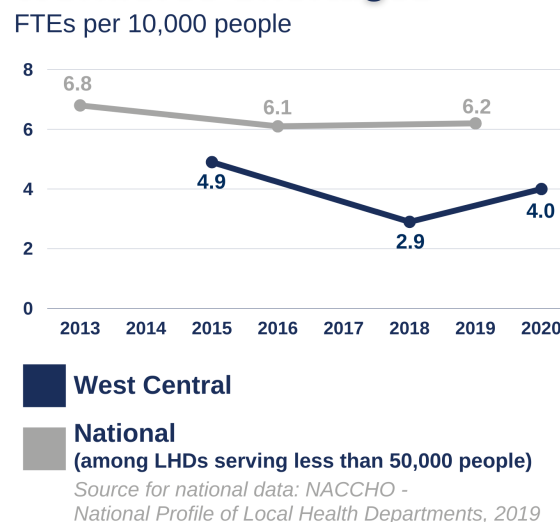
Per Capita Expenditures



Expenditures



Workforce Shortages



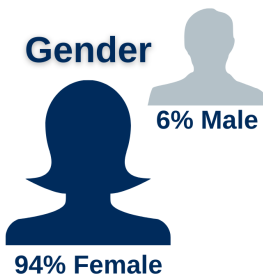
West Central District Health Department has had **fewer staff per capita** than similar-sized health departments throughout the nation.

Our Team

18 Staff
14 FTEs



Gender



Race



Ethnicity

